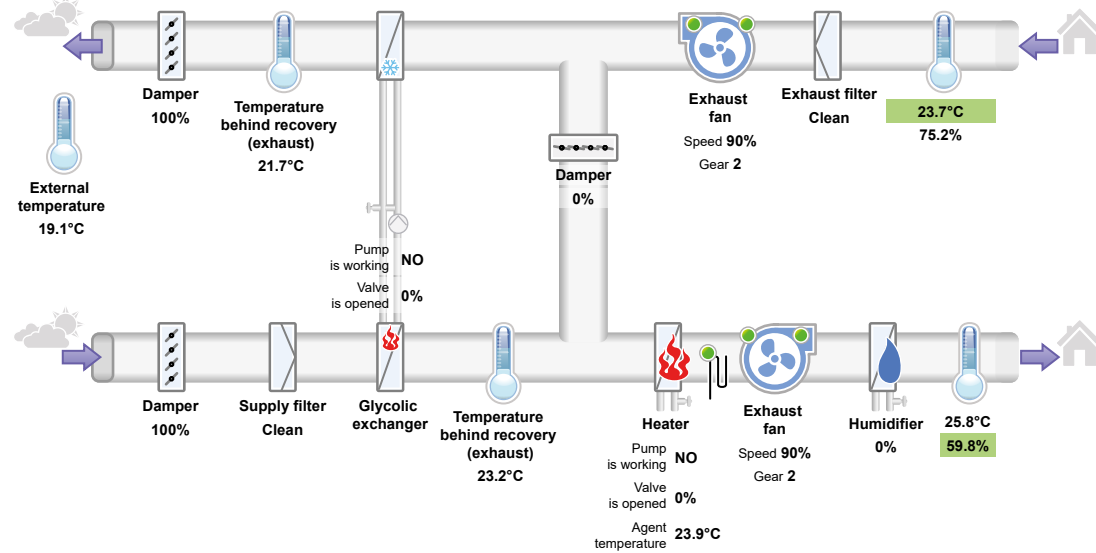




### Visualization of air handling unit operation through a web page

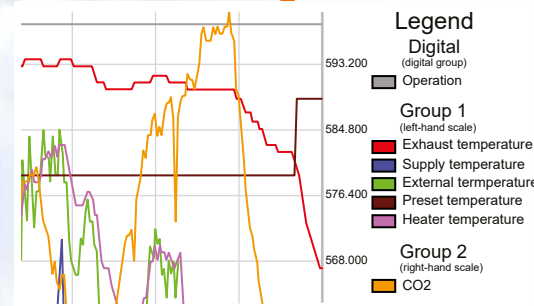


**Clima Gold Sp. z o.o.**  
Dolna 23 | 84-230 Rumia

**Office - Production:**  
ul. Dolna 23 | 84-230 Rumia  
phone: +48 501 939 638

#### Technical and commercial representatives:

- ➔ lodz@climagold.com
- ➔ kielce@climagold.com
- ➔ lublin@climagold.com
- ➔ gdansk@climagold.com
- ➔ krakow@climagold.com
- ➔ poznan@climagold.com
- ➔ rzeszow@climagold.com
- ➔ szczecin@climagold.com
- ➔ wroclaw@climagold.com
- ➔ katowice@climagold.com
- ➔ bialystok@climagold.com
- ➔ warszawa@climagold.com
- ➔ bydgoszcz@climagold.com
- ➔ zielonagora@climagold.com



Calendar

Monday	Tuesday	Wednesday	Thursday	Friday	Saturday	Sunday
<b>Zone 1</b> Time: 07:00 - 16:00 Preset temperature: 23°C Fan gear: 1	<b>Zone 2</b> Time: 16:01 - 23:00 Preset temperature: 23°C Fan gear: 2	<b>Zone 3</b> Time: 00:00 - 00:00 Preset temperature: 20°C Fan gear: 1				

Edit calendar

Day of the week:  Monday  Tuesday  Wednesday  Thursday  Friday  Saturday  Sunday

Zone:  1  2  3

Start:  :

Stop:  :

Preset temperature:

Fan gear:  1  2  3

climagold.com







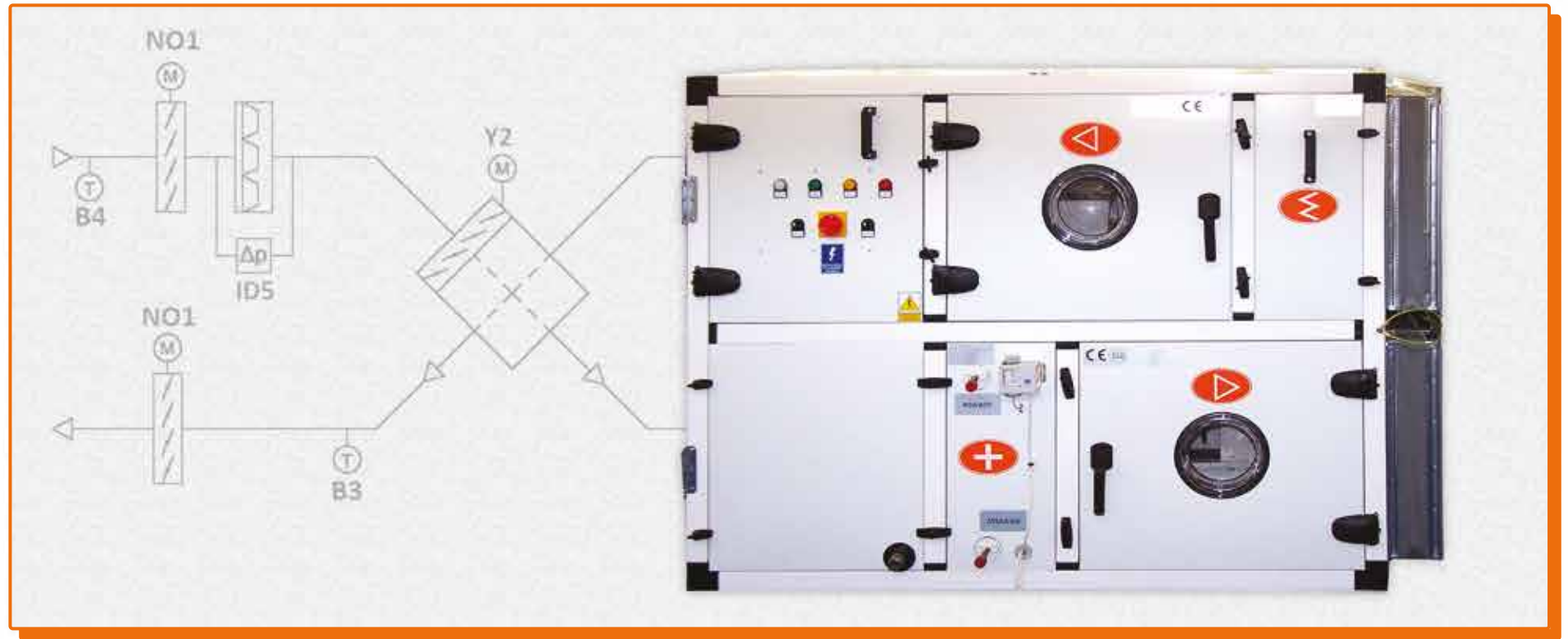
### Measurements and execution elements

- Renowned equipment suppliers. Reliability significantly reduce operating and servicing costs
- Temperature sensors of Carel NTC characteristics allow to resign from shielded cables, mounted in a channel or in a room
- Dampers and Belimo valves actuators
- Belimo valves to adjust in hot and cold water systems with max. 50% glycol. Factor temperature from -10°C to 120°C. Nickel body, brass forging, closing element and axis: stainless steel
- Transducers of other adjustable values, such as humidity, concentration of CO2, VOC, standard pressure of 4-20 mA, noise-resistant



### Room adjuster

- th Tune room adjuster for independent temperature setting from several rooms, turning on/off the system, changing efficiency, deleting alarms
- Possible measurement of temperature and humidity by an adjuster Surface mounting or flush mounting



### Driver

- Drivers of pCO group, freely programmable with a number of applications
- Standard application that can be expanded with unusual needs of a user
- Display built in a driver or elevated in a form of a panel for wall mounting. Distance from a control box up to 200m

